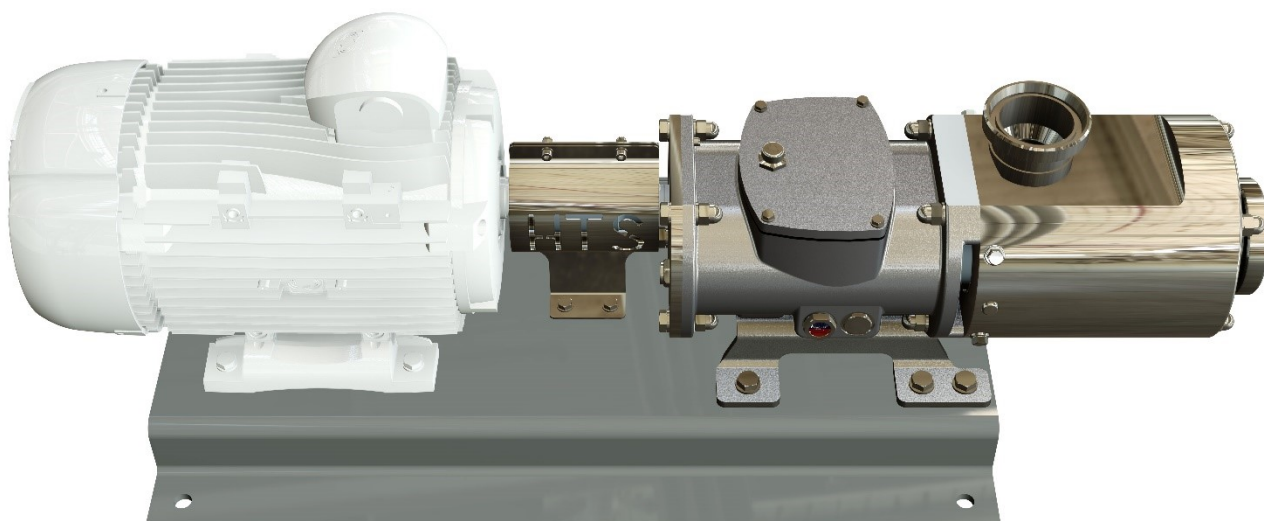




OUR POWER, YOUR SATISFACTION



RAPTOR SERIES

Sanitary pumps

HTS series



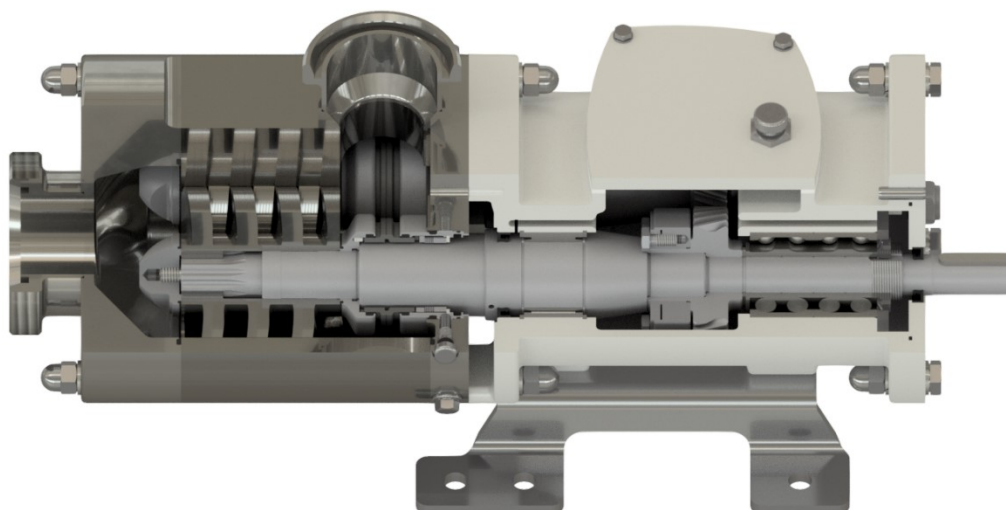
HTS Hygienic Twin Screw Series

The HTS is the new state-of-the-art of hygienic twin screw technology designed to achieve the maximum level of sanitation for food and pharmaceutical market.

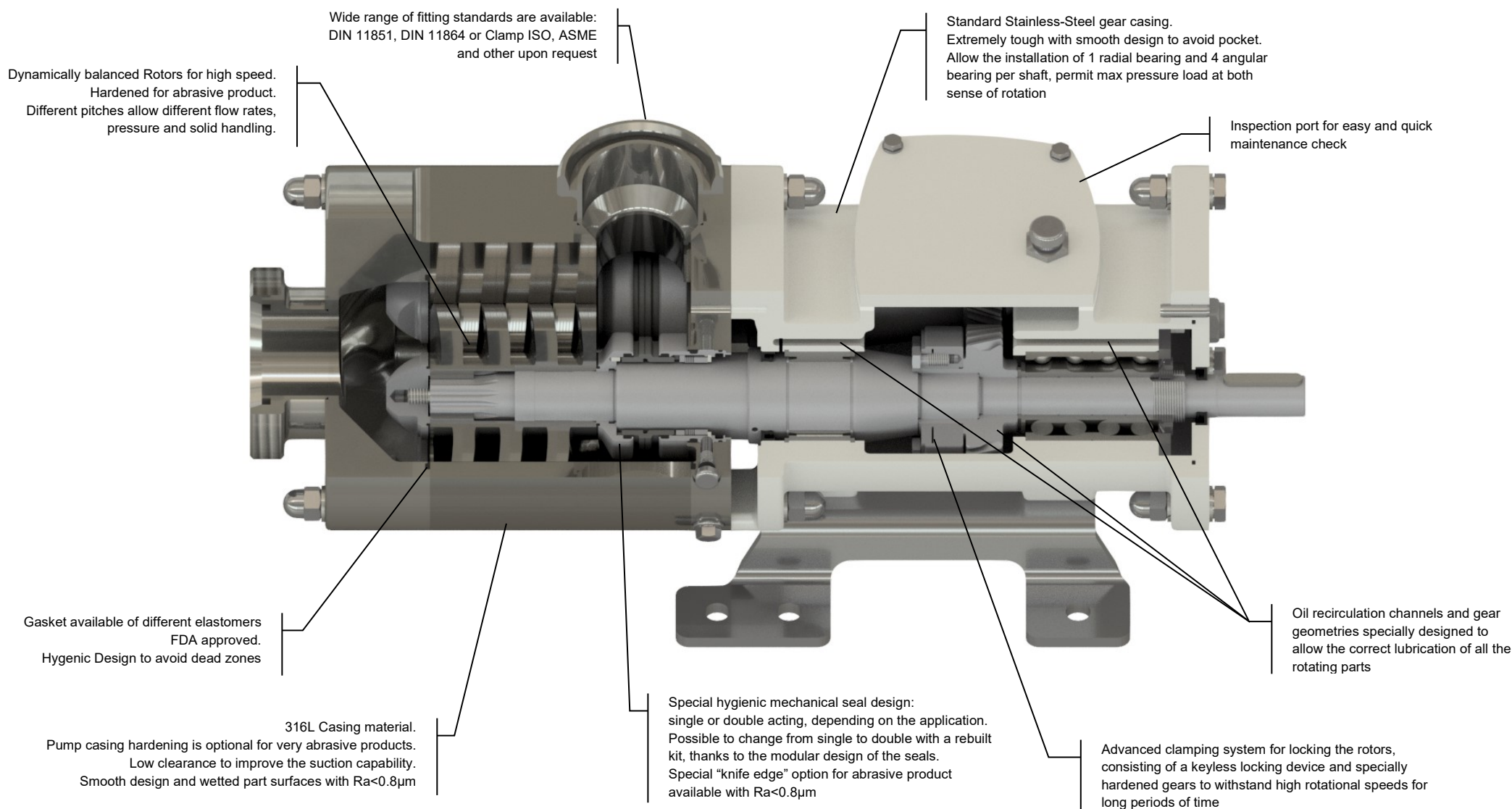
The pump design is extremely tough thanks to oversized shaft and bearing dimensions.

The main features of the twin screw pumps are:

- Gentle treatment and low pulsations do to axial conveying of product
- High suction capability with low NPSHr values
- The rotors and the pump casing are not in contact: dry run is possible with flushed seals
- CIP and process with only one pump
- High pressure and high flow rate with a very compact pump
- Suitable for very viscous liquids (up to 1.000.000 cps)
- Suitable to handle solids and/or abrasive products
- Easy and quick maintenance



Detailed characteristics



VERSION AND OPTION

Casing material

Base materials:

AISI 316

Heat treatments:

Kolsterising

Materials of the sealing shaft

Base materials:

AISI 630

Duplex (F51) or Superduplex (F55) on request

Rotor materials

Base materials:

AISI 316

Duplex (F51) or Superduplex (F55) on request

Heat treatments:

Kolsterising

Gasket materials

Base materials:

H-NBR

EPDM

FPM

FFPM

Base plates

standard Baseplate

standard Baseplate with 3-A adjustable feet

Hygenic Base frame (meets hygenic recommendations)

Connections

DIN 11851

DIN 11864-1 / DIN 11864-2 / DIN 11864-3

Clamp ISO 2852, Clamp ASME-3A, Clamp DIN 32676

RJT

SMS 1145

Macon

Sealing system

Single acting Hygenic balanced mechanical seal (special design)

Double acting Hygenic balanced mechanical seal (special design)

Control devices

Control panel

Control panel with inverter

Drive with integrated inverter

Equipment and optional

Heating jacket

Quench Pot flushing

Drive Cover

Certifications

CE

(EHDG and 3-A certifications on development)

FEATURES OF USE

Operating range

Flow

Up to 200 m³/h

Pressure

Up to 25 bar

Temperature

from -40°C until to 150°C

Typical applications

Milk and Dairy



Beverages



Breweries



Bakery



Cosmetic and pharmacy



Tomato industry



TABLE OF MODELS

Flow and pressure

Size	Model	Rotation	Max temperature [bar]	Max Flow rate at 0 bar [m³/h] *	Max rpm	Max Pressure [bar]	Max diameter of solid passage [mm]
HTS 2	2-1	CW and CCW	130°C for product 150°C for Cleaning (higher temperature on request)	27	3600	25	16
	2-2						
	2-3						
	2-4						
HTS 4	4-1			65	3600	25	24
	4-2						
	4-3						
	4-4						
HTS 6	6-1			100	3000	25	30
	6-2						
	6-3						
	6-4						
HTS 8	8-1			200	2500	25	40
	8-2						
	8-3						
	8-4						

***Based on largest Pitch**





Via Carlo Cattaneo, 19/25
36040 SOSSANO (VI)
ITALY

Phone: +39-0444-888151
Fax: +39-0444-888152
E-Mail: sales@novarotors.com
Web site: www.novarotors.com



ISO 9001: 2008
No.:2011/1353



OHSAS 18001:2007
No.:2010/915



CEC 07 ATEX 110 - REV.1